

PROADEC Portugal
SURTECO GROUP

PROADEC PROMATT
ULTRA MATT EDGINGS

Matt finishes can be found in diverse areas of our modern day living as home paints, cars, technology, make-up, ... as a sign of differentiation and undercover luxury.



It gives applications simplicity and deepness, while adding sophistication and modernity for its unique appearance and feelings it reveals...



A modern interior design featuring a mix of materials. In the foreground, a white sideboard with a wooden top holds a dome-shaped lamp. To the right, a tall cabinet with a white frame and a wooden slatted door stands next to a large window with sheer curtains. A blue sofa is partially visible. In the background, a doorway leads to a room with a wooden staircase and a brick wall. The text "Matt surfaces work perfectly when mixed with materials as wood, brick or stone to create a modern and contemporary design." is overlaid on the image.

Matt surfaces work perfectly when mixed with materials as wood, brick or stone to create a modern and contemporary design.

What distinguishes the different matt options?

- .low gloss level < 6 GU
- .low-reflection surface
- .velvety effect to the eye and the touch
- .scratch resistant
- .resistance to dirt, dust and grease
- .no- fingerprints
- .easy to clean

PROADEC presents:

PROMATT

ULTRA MATT EDGINGS

An abstract 3D composition featuring several white, curved, and angular geometric forms. A prominent white ring is in the upper left, and a large, dark gray, angular block is on the right. A white, curved band cuts across the scene. The background is a gradient of light to dark gray, with deep shadows under the white forms.

NO REFLECTION

A close-up photograph showing a hand with light-colored skin and manicured nails touching a dark, reflective surface. The surface has a subtle sheen, and the lighting creates a soft, velvety effect. The background is a blurred, light blue-grey color.

VELVETY EFFECT TO THE EYE
AND THE TOUCH

A close-up photograph of a person's hand, specifically the index and middle fingers, touching a dark, possibly black, surface. The hand is wearing a ring on the ring finger. The background is a light, neutral color. The overall tone is dark and moody.

NO FINGERPRINTS
OR TRACES OF GREASE

A close-up photograph showing a person's hand, adorned with a silver ring, using a light blue microfiber cloth to wipe a dark, possibly black, surface. The cloth is folded and held against the surface, with the hand moving it across. The background is dark and out of focus.

SCRATCH RESISTANT
AND RESISTANT TO DIRT AND DUST

Specifications:

Gloss level: 2 GU \pm 2

Thicknesses: 0,80 mm - 1,30 mm

Widths: 14 - 275 mm (up to 1,2 mm) & 16 - 260 mm (1,3 mm)

Slit or jumbo

Finishes: almost all in our range

Decors: Unicolours, woodgrains and fantasies

With or without protective film

Physical properties:

Very low reflection surface

Resistance to fingerprints and traces of grease

Velvety touch

Scratch Resistance (1,5 N)

Easy to clean

Advantages of PROMATT

Very low gloss level: $2 \text{ GU} \pm 2$

No fingerprints

Low reflection surface

Velvety touch

Easy to clean

Scratch resistant

Available in any decor

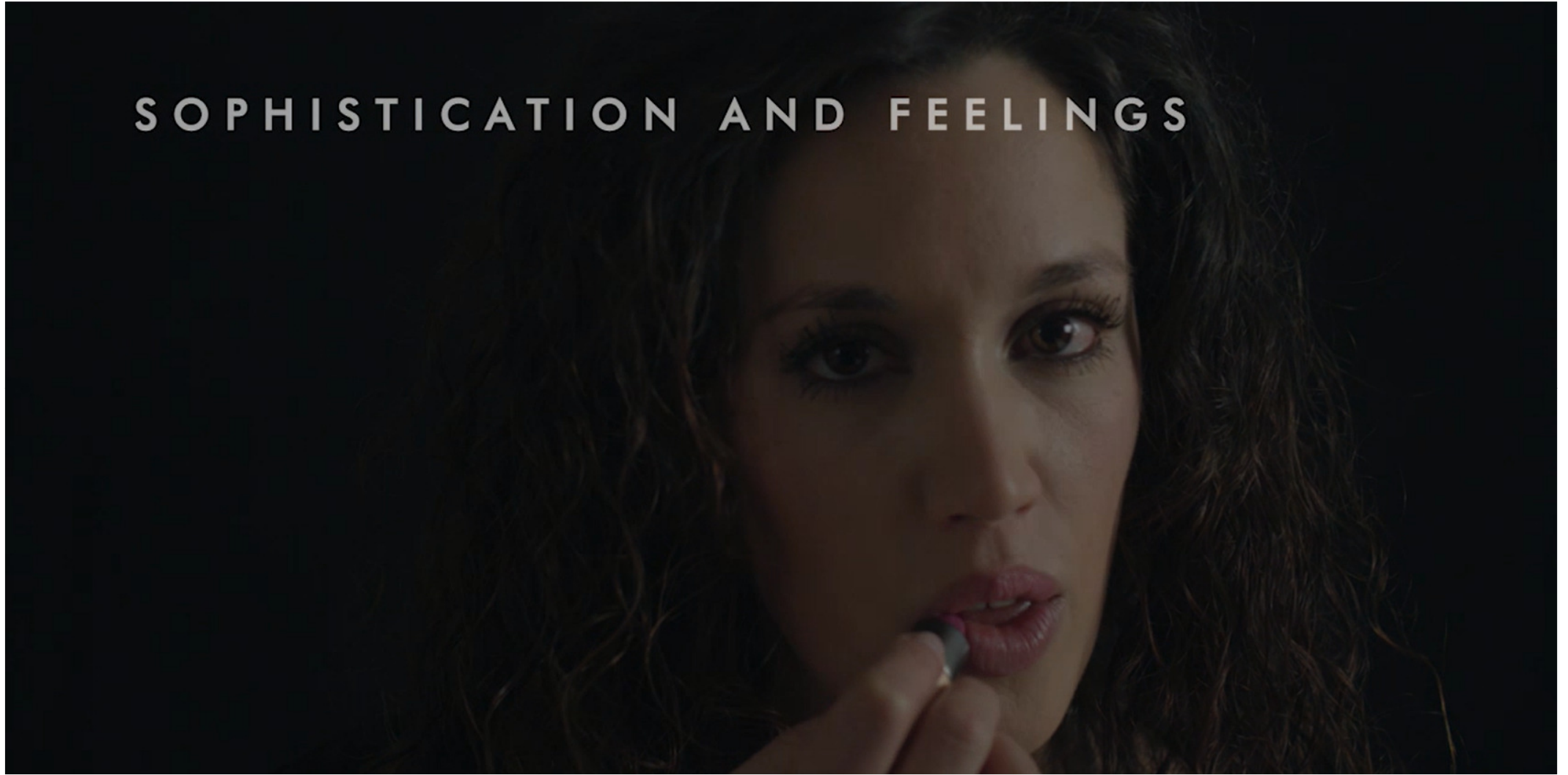
Thin and thick (from 0.80 mm up to 1,3 mm)

Slit or jumbo

Matches all top quality ultra matt boards in the market.

PROMATT helps creating high end furniture for its
unique appearance and the feelings it reveals...

S O P H I S T I C A T I O N A N D F E E L I N G S







PROMATT is a new product family: M

Example of a product codification:

Decor	2110 (black)
Material	ABS
Width	slit 23 mm
Thickness	0,80 mm
Protective film	without

The product's code structure will be as follows:

2.M.01.2110.I.023.200

The surface finish for PROMATT is finish 01 Perfect Smooth.

Application:

PROMATT edgings are suitable for applications matching ultra matt boards from main manufacturers in the market.

Machining:

Given their ABS based material with excellent processing characteristics, these edgings are easily processed either by hand or machine.

Recommendation:

We recommend buffing should as soft as possible.

If the joint becomes too polished it becomes glossy and more visible.

Buffer should be adjusted a 90° angle to the board.



PROMATT
ultra matt edgings

PROADEC Portugal

SURTECO GROUP

PROADEC Portugal, S.A.

Vila do Conde

Portugal

TEL. +351 229 287 000 | proedge@proadec.com

www.proadec.com

 facebook.com/proadecportugal/